

True RMS Appliance Tester/Power Analyzer

Compact battery operated device for analyzing AC power loads - PC interface plus datalogging

Features:

- Four simultaneous LCD displays of Watts, Power Factor or VA, Voltage or Hz, Amps
- True RMS Voltage and current measurements of sine, square, triangular and distorted wave forms with a crest factor < 5
- Plug device to be tested directly into the Power Analyzer
- **Model 380803** has built in Datalogger that stores up to 1,012 readings. Choice of single record storage or continuous datalogging
- **Model 380801** used for data acquisition when connected to a PC
- Choice of battery or AC adaptor power
- Max Recall, Data Hold, Overload Protection
- Sampling (update) rate is 2.5 times per second
- Windows® 95/98/NT/2000/XP/ME software allows user to download stored data or save data directly, and to create an ASCII file. Computations include phase angle, apparent and reactive power, consumption and cost, and power factor correction
- Includes software, serial cable, 8 AA batteries, power cord, 117 VAC adaptor, and built-in carrying case



Windows® Software included to monitor readings on PC, display KWH, KWH/month, cost and print reports

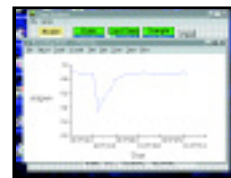
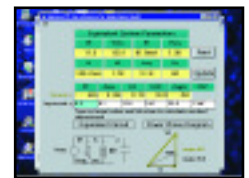


Chart any of the measurements over time and save/print data by pressing Print key.



View tested product's equivalent circuit and phase angle diagram. Power factor correction determines capacitor value.

Applications

- Measure and Audit power consumption of single phase devices
- Evaluate load performance under varying line conditions
- Demonstrate effectiveness of power conservation efforts
- Characterize device AC power requirements



Built-in heavy duty carrying case.

Specifications:	Range	Resolution	Basic Accuracy (%rdg)	Input Signal Range
Watt (AC/DC)	200/2000W	0.1/1W	±(0.9% +4d)@50/60Hz	300V, 20A, 40-400Hz
Power Factor:	0.5 to 1.0	0.001	(Based on W, V, A)	250V, 20A, 50/60Hz
Voltage:	200.0/750V	0.1/1V	±(0.5%)	1000VDC, 750VAC
Current:	2/20A via terminals 2/15A via sockets		±(0.5%)	(Fuse Protection)
Frequency:	40Hz to 20kHz	1Hz to 10Hz	±(0.5%)	
Dimensions/Weight:	13.9x11.8x3.9" (352x300x100mm) / 3.6 lbs. (1.6 kg)			

Ordering Information

- 380801**True RMS Single Phase Power Analyzer
- 380801-NIST** ..True RMS Single Phase Power Analyzer w/NIST Certificate
- 380803**True RMS Power Analyzer Datalogger
- 380803-NIST** ..True RMS Power Analyzer Datalogger w/NIST Certificate
- 152340**240VAC Adaptor

