

1000A 3-Phase Power & Harmonics Analyzer

For power measurements and analysis
Of single and 3-phase/3-wire or 3-phase/4-wire systems

Features:

- Large backlighting LCD displays up to 35 parameters in one screen (3P4W)
- Clamp-on True RMS power measurements with on-screen Harmonics display (1-99th order)
- Simultaneous display of Harmonics and Waveform
- Display of Waveform with Peak Values (1024 samples/period)
- Analysis of Total Harmonic Distortion (THD-F)
- Displays Active Power (kW), Apparent Power (kVA), Reactive Power (kVAR) and Power Factor
- kWh and kVARh energy measurements
- Maximum Demand (MDkW, MW, kVA, MVA) with programmable period
- Adjustable CT ratio (1 to 600) and VT ratio (1 to 3000)
- Graphic Phase diagram with 3-Phase system parameters
- 3-phase Voltage or Current Unbalanced Ratio (VUR, VIR) and Unbalanced Factor (d0%, d2%)
- Calculated Unbalanced Current through Neutral Line (In)
- Datalogger records up to 52428 records in single phase, (17476 records in 3-phase)
- Capture 28 Transient events (including Dip, Swell and Outage) with programmable threshold (%)
- Optically isolated RS-232 interface with software to download Waveforms, Power Parameters and Harmonics



Complete with (3) 1000A current clamps, 4 voltage leads with alligator clips, 8 AA batteries, AC adaptor, software, PC interface cable, and carrying case

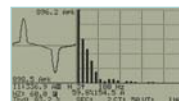


Optional 3000A Flexible Current Clamp Probes 24" (610mm) long for wrapping around busbars (Model 382098)



Optional 100A Current Clamp Probes (Model 382097) with 1.2" (30mm) jaw size

Specifications	Range	Basic Accuracy
ACV (True rms)	600V	±(0.5%rdg+5d)
ACA	1000A	±(0.5%rdg+5d)
Active Power (kW)	9.999MW	±(1%rdg+8d)
Apparent Power (kVA)	9999kVA	VA=Vrms x Arms
Reactive Power (kVAR)	9999kVAR	VAR= sqrt (VA ² -W ²)
Power Factor	0.0 to +1.00	±(1.5%rdg±8d)
Frequency	45-65Hz	0.1Hz
Phase	-180.0°~ 0°~ +180.0°	±1°
Harmonics	1 to 99	±2%
Crest Factor	1.00 to 99.99	±(5%+30d)
Peak AC Voltage accuracy		±(5%rdg+30d)
Peak AC Current accuracy		±(5%rdg+30d)
Active Power Energy (kWh)	0mWh to 999.999kWh	
Reactive Power Energy (kVARh)	0.0kVARh to 1000MWh	
Datalogging	52428 records (single phase)/17476 records (3 phase)	
Dimensions	10.1 x 6.1 x 2.3" (257 x 155 x 57mm)	
Weight	Meter: 2.5 lbs (1160g); Clamp: 1.3 lbs (600g)	



Harmonics Analysis



Phase Analysis



Power Analysis



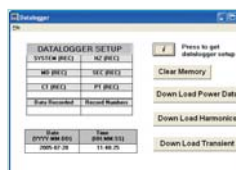
Internal Menu

Ordering Information:

3820951000A 3-Phase Power Harmonics Analyzer (110V)
3820961000A 3-Phase Power Harmonics Analyzer (220V)

Accessories

382000Voltage Test Leads with Alligator Clips (4 leads)
382097100A Current Clamp Probes (Set of 3)
3820983000A, Flexible Current Probes (Set of 3)
757057Thermal Paper for PR20 (6 pack)
USB100RS-232 to USB Adaptor



Software included to download, store data and display on a PC



Software Harmonics Phase Analysis



Software Harmonics Analysis

